

## Warranty

The repair work will be done without charge for the failure occurring under warranty and in the condition that the product was correctly used according to the display on the machine and other instructions. Bring this document and the product to the store of purchase. In the case of a field repair at the site where the product is located, or when the transportation of the product is necessary, the actual cost of the travel or transport expenses will be charged.

Model name		VC-142	Repair Note
Customer information	Name		
	Address		
Date of purchase	Date of purchase and address		
Warranty period			
One year from the date of purchase (body)		TEL	

35 Make sure to fill in all the fields indicated by ■. If not, this warranty is invalid.

E

# SAL

*amadana*

## INDEX

Thank you for purchasing SAL.

Please read this document carefully before using this product for proper use.

Also, keep it for future reference in case you are not sure about usage or when there is a trouble.

<b>Safety precautions</b>	<b>2~6</b>	<b>Troubleshooting</b>	<b>29</b>
<b>Prior to use</b>	<b>7</b>	<b>Specifications</b>	<b>30</b>
<b>Construction</b>	<b>8</b>	<b>After-sale service</b>	<b>31</b>
<b>Display</b>	<b>9~10</b>	<b>Customer service</b>	<b>32</b>
<b>How to use (preparation)</b>	<b>11~18</b>	<b>Customer registration</b>	<b>33</b>
<b>How to use</b>	<b>19~27</b>	<b>Warranty</b>	<b>34~35</b>
<b>Playback on a PC</b>	<b>24</b>		




1

## Safety precautions





\* Please carefully read this "safety precautions" for proper use before using the product and keep it for future reference.

\* The following lists the important safety precautions to prevent harms to the user and others and damage on your properties. Be sure to observe them.

\* The symbols and their significance when the precautions are not followed are described below.

 <b>Danger</b>	This symbol indicates an imminently hazardous situation which will result in death or serious injury, if the product is not operated properly.
 <b>Warning</b>	This symbol indicates a potentially hazardous situation which could result in death or serious injury, if the product is not operated properly.
 <b>Caution</b>	This symbol indicates a potentially hazardous situation which may result in injury or damage to property, if the product is not operated properly.

\* The following graphic symbols indicate precautions that should be observed.

 Indicates what you are prohibited to do.	 Indicates that you are not allowed to disassemble	 Indicates that the product should not be exposed to water.
 Indicates that you MUST do without fail (imposition).		

2

Safety precautions			
⚠ Danger		⚠ Warning	
<ul style="list-style-type: none"> <li>Do not use, keep, or leave the product near fire, under direct sunlight, or extremely hot places such as sun-heated cars.</li> <li>Do not disassemble or alter this product.</li> <li>Do not let the product get wet.</li> <li>Do not throw this product into fire.</li> <li>Do not hit with a hammer or apply unnecessary force.</li> </ul>	<ul style="list-style-type: none"> <li>Do not put this product in heating equipment such as a microwave oven or high-pressure container.</li> <li>Do not add a hard shock or throw this product.</li> <li>Turn off in areas where using the product is prohibited such as in an aircraft or hospital.</li> <li>In the event that the display or camera lens is damaged, pay attention to broken pieces and inside of the product.</li> <li>If the product is not charged after the specified charge time, stop charging.</li> </ul>	<ul style="list-style-type: none"> <li>If the internal battery leaks or has an unusual odor, immediately stop using the product and keep it away from fire.</li> <li>Do not use this product in moist areas such as a bathroom.</li> <li>If the USB terminal gets dusty, wipe away with soft cloth.</li> <li>If the product is not used for a long time, remove the USB connector.</li> <li>Do not apply strong force to the connector.</li> </ul>	<ul style="list-style-type: none"> <li>Do not place this product in an unstable area such as wobbling table or tilted place.</li> <li>Do not leave or use this product in a place with high moisture or dust, or at high temperature.</li> <li>Keep away from small children.</li> <li>If a strap etc. is attached, do not swing around holding the strap.</li> </ul>
3			4

Safety precautions		Other precautions	
⚠ Caution		⚠ Caution	
<ul style="list-style-type: none"> <li>In the event that the LCD is accidentally damaged and the liquid crystal leaks, do not put it in your mouth, on your skin, or inhale it. If the liquid reaches the eyes or mouth, immediately rinse with clean water and consult doctor.</li> <li>Do not dispose with general garbage. Follow the rules of your local government for disposal.</li> <li>Do not charge with wet hands.</li> </ul>	<ul style="list-style-type: none"> <li>Do not put foreign matters or water inside.</li> <li>Do not sit on a chair while this product is in the pocket of your pants. It may damage the display.</li> <li>We cannot compensate the content of what you shoot. In the event that you cannot shoot due to defects of this product, please forgive us for not compensating the content.</li> <li>Do not use in powerful magnetic field.</li> </ul>	<ul style="list-style-type: none"> <li>Do not fall or bang this product. Strong impact may damage the lens or display.</li> <li>Keep as far away as possible from sources of magnetism or electromagnetic waves. Operating this product near TV may cause disturbed images due to electromagnetic waves.</li> <li>For care, wipe with dry and soft cloth. If the product is heavily soiled, wet a cloth, wring out water firmly, and wipe the soil off. Then, wipe with dry cloth.</li> </ul>	<ul style="list-style-type: none"> <li>Solvents such as benzene, thinner, or alcohol may cause change of properties of the product or peeling of paint. Please do not use them.</li> <li>The display is manufactured with highly accurate technology, but you may see black spots or constantly lighted cells. These are not a failure and they are not recorded.</li> </ul>
5			6

## Prior to use

### About the internal battery

If you no longer use it, please bring it to stores that recycle rechargeable batteries.  
For more information, visit the web site of JBRC:

<http://www.jbrc.net/hp/contents/index.html>

### The Type of battery

Lithium-ion battery



Please note that we are not responsible for any direct or indirect damages arising from use or failure of this product.  
Please note that we are not responsible for any loss of data caused by this product.

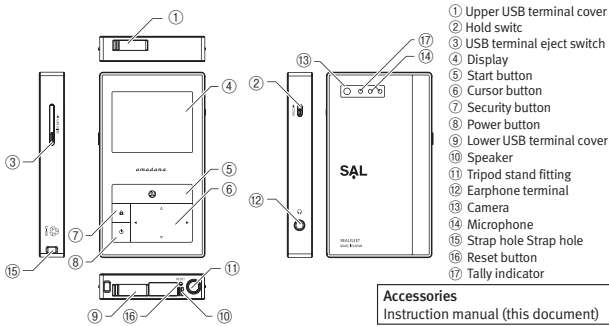
Copy or reprint of the software that comes with the product on the network for business aims without prior notice is prohibited.

### About trademarks

Windows® is a trademark of Microsoft Corporation in the United States and other countries.

7

## Construction

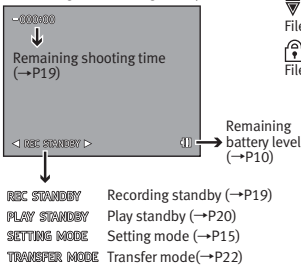


8

## Display

### [Description of icons]

The following is the recording standby screen.



9

### How to check remaining battery level

Turn on the power of this product and check the battery icon.

There is enough power.

There is remaining power.

There is little power.

Please charge the battery.

The left side is red.

Charging.

\* Guideline for hour of continuous use:  
Play: about 110 minutes  
Recording: about 110 minutes

\* If the battery runtime becomes shorter, the battery is close to the end of its life. Please contact our support center for replacing batteries.

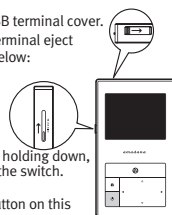
10

### Battery charge (preparation)

Before using, charge the battery according to the following steps:

**1** Open the upper USB terminal cover.

**2** Operate the USB terminal eject switch as shown below:



**3** Press the power button on this product to turn it on.

**4** Connect the USB terminal to the USB port of your PC and charge this product.

\* Guideline for hour of charging time: about 120 minutes

\* The tally indicator turns on.

\* While charging, select either play standby or recording standby. It will automatically turn off and enters the sleep mode, but charging will continue.

**5** When finished, disconnect the USB terminal of this product.

**6** Return the USB terminal eject switch and close the upper USB terminal cover.

11

### Precautions about battery charge

\* If the battery runs out and the product does not turn on, connect it to the USB port of your PC while the product is off.

It will automatically turn on after about 30 minutes; after that, it will finish charging in about 120 minutes.

\* If the humidity is too high while charging or when you start charging, it will stop charging. In such a case, disconnect this product from the USB port of your PC and try again after leaving it for a while.

If the USB port of your PC is located near the exhaust outlet, put this product away from the exhaust outlet by using USB extension cable etc.

\* The battery is a consumable supply. As you repeat charging, the battery runtime gets shorter.

\* During recording, play, or in device mode, automatic power off does not work. Therefore, charge the battery in recording standby or play standby mode.

\* Using this product while charging may shorten the battery life.

\* Do not use USB hub or AC type battery charger as the battery may not be properly charged.

\* The remaining battery level is not accurately displayed for one minute after charging.

12

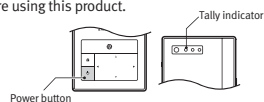
### How to use (preparation)

#### To turn on

**1** Press the power button. The display shows SAL's logo mark, and then the recording standby screen will be displayed.

\* If the logo mark is not displayed and "battery is low" is displayed instead, the battery is dead. Charge it before using this product.

\* If nothing is displayed on the screen and the tally indicator blinks on and off when you press the power button, then the battery is dead. Charge it before using this product.



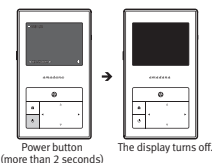
13

#### To turn off

**1** Hold down the power button for more than two seconds.

\* Check that the display is off.

\* If no operation is made for a certain period of time, the automatic power off function turns off the product automatically.



Power button (more than 2 seconds)

The display turns off.

#### About the power source

This product has three statuses as follows:

##### 1. Power on

The status in which you can record or play.

##### 2. Sleep

Press the power button while it is on to enter this status. The screen turns off and tally indicator turns on.

##### 3. Power off

Four hours elapses after entering the sleep status, the power automatically turns off. The tally indicator turns off.

If you press the power button while the product is in **sleep status**, it turns on after about **four seconds** and shows the recording standby screen.

If you hold down the power button for three seconds while the **product is off**, the display shows "SAL" and the product turns on in about **15 seconds** and shows the recording standby screen.

14

### How to use (preparation)

#### To set the date

When you turn on this product first time, you must set the date and time before using other functions

**In the recording standby screen**

- Press the left or right button to switch to the setting mode.
- Press the up or down button to switch to the date mode and press the start button.
- Press the up or down button to select numbers.

- After setting the year, press the right button and set the month and date in the same manner.
- When you finish setting all numbers, press the start button.

\* If no operation is done for ten seconds during setting, it returns to the setting mode. In such a case, the date is not set.

**Date mode**

Screen images

15

### How to use (preparation)

#### To set the time

**In the recording standby screen**

- Press the left or right button to switch to the setting mode.
- Press the up or down button to switch to the clock mode and press the start button.
- The time is displayed in reverse mode. Press the up or down button to select numbers.

- After setting the hour, press the button and set the minute in the same manner.
- When you finish setting all numbers, press the start button.

\* If no operation is done for ten seconds during setting, it returns to the setting mode. In such a case, the time is not set.

**Clock mode**

Screen images

17

## How to use

### To record

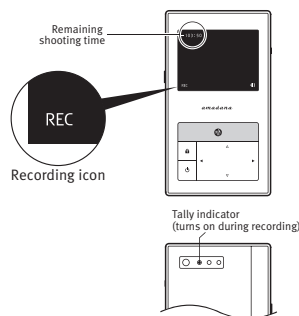
1 Turn on the product.

2 The recording standby screen will be displayed.  
To start recording, press the start button.

- \* The recording icon is displayed during recording.
- \* The tally indicator turns on during recording.
- \* The remaining shooting time decreases as you shoot.

3 To finish, press the start button again.

- \* You can no longer shoot if the remaining shooting time becomes zero.



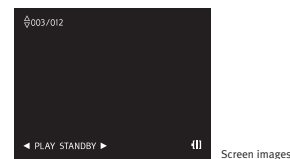
19

### To play

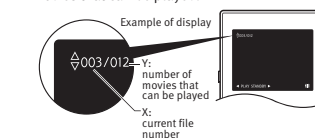
- \* You can play only what you have recorded using this product.

1 Turn on the product.

2 Press the left or right button to display the play standby screen. ◀ PLAY STANDBY ▶



3 Select the movie that you want to play using the up or down button.  
The preview of the selected movie will be displayed.  
When the preview is not displayed, its security is on. For more information on security, see page 25.  
You will see numbers in the form of X/Y, where X is the current file number and Y is the number of movies that can be played.



20

## How to use

4 Press the start button to start playing.

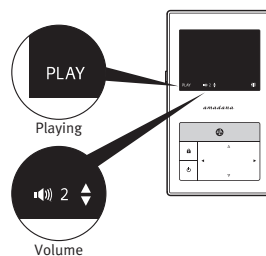
5 To finish, press the start button again.

### [Convenient usage]

While playing, press the left or right button to play or playback at faster speed (x4, x16, or x32).  
To stop fast play, press the start button.

- \* To listen audio using earphones, connect the earphones to the earphone terminal. In this case, the body does not produce any sound.

Press the up or down button to adjust the volume.



21

### To swap movies between the same type of devices

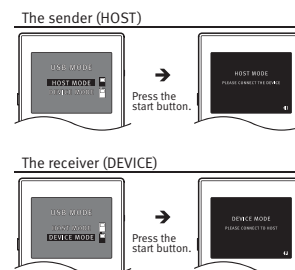
By connecting devices directly, you can transfer movies you have shot to the other device.

#### How to swap:

1 Turn on both sending and receiving devices.

2 Set both sending and receiving devices into the transfer mode using the left and right buttons. ◀ TRANSFER MODE ▶

3 Select "HOST" on the sending device, and select "DEVICE" on the receiving device. Press the start button on both devices.



22

## How to use

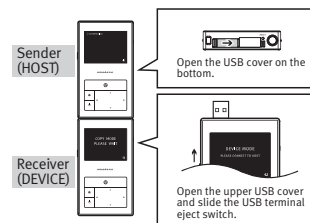
**4** Open the USB cover on the bottom of the sending device. Eject the upper USB terminal of the receiving device, and connect the USB terminals.

**5** On the sending device, select the movie that you want to send using the up or down button and press the start button.

\* Transfer begins when you press the start button. During transfer, "COPYING" will be displayed.

**6** When transfer is completed, the display of the sending device returns to the select movie screen.

**7** When transfer is finished, disconnect the devices.



### Notes:

- \* To transfer, make sure to set both devices to the transfer mode.
- \* During transfer, do not disconnect the devices.

23

## To delete movies

**1** In the play mode, select movie that you want to delete.

**2** Press the security button.

**3** Using the up or down button, select ONE (to delete one movie) or ALL (to select all movies) and press the start button.

**ONE:** only one movie will be deleted.

**ALL:** all the movies will be deleted.

**4** A message to confirm again will be displayed. Select "YES" to delete or select "NO" to cancel and press the start button.

**5** When deleted, "DELETED" will be shown on the display to show that movie(s) were deleted.



Screen images

### Notes:

Movies whose security is on cannot be deleted. To delete, cancel security.

\* Please note that deleted movies cannot be restored.

24

## How to use

### To turn on security

If you turn on security, the movie cannot be previewed nor be deleted.

**1** In the play standby mode, select the movie whose security you want to turn on.

**2** Hold down the security button for at least five seconds

**3** "LOCKED" will be shown on the display and the preview of the movie will not be displayed.



25

### To cancel security

**1** To cancel security, select the file whose security is on.

**2** Hold down the security button for at least five seconds.

**3** "RELEASED" will be shown on the display and the preview of the movie will be displayed.



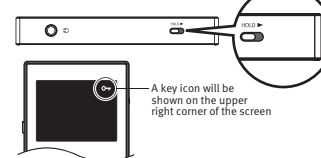
\* If you transfer a movie whose security is on to a PC, you cannot play it. To play on your PC, cancel security on this product before transferring to your PC.

### To lock keys

When you carry this product, lock the keys so that the power button will not be accidentally pressed and turned on.

**1** Slide the hold switch up.

**2** Key operations become disabled.



### To unlock keys

**1** Slide the hold switch down.

**2** Key operations become enabled.

26





### After-sale service

#### 1 Please check and keep the warranty.

Make sure you have the stamp that shows the name of the dealer and date of purchase on the warranty. Carefully read and keep it for future reference.

#### 2 The warranty period is one year from the date of purchase.

#### 3 For repair service:

«During the warranty period»  
Bring the product with the instruction manual (back cover) to the dealer where you purchased the product. We offer repair service according to the description of the warranty.

«After the warranty period»  
If the product can be used after repair, we offer repair service at cost if you desire.

#### 4 System of the repair fee

Repair fee includes technical fee, parts expenses, travel expenses, etc. Technical fee is the cost of diagnosis, repair of the defective part, replacement of parts, adjustment, check after repair, etc. Parts expenses are cost of parts used for repair and auxiliary materials. Travel expenses are cost of dispatching technician(s) to the location where the product is.

#### 5 For more information on the description above, in case of you received this product as a gift, or you have moved, etc., please feel free to contact our support center for inquiries.

\* Customers should NEVER repair, disassemble, or alter the product.

\* Data recorded on the body may be lost during repair work. Make sure to take backup.


31

### Customer service

#### For repair

Repair service center, REALFLET Co., Ltd

#### Navi-Dial

 **0570-077-773** (throughout Japan)


Open 10:00 - 19:00, Mon. through Fri.  
(closed on Saturdays, Sundays, and holidays)

Inquiry via fax  
Fax 0570-022-227

#### For purchasing consumable supplies and parts

Customer support center, REALFLET Co., Ltd

#### Toll free dial

 **0120-161914**

Open 10:00 - 19:00, Mon. through Fri.  
(closed on Saturdays, Sundays, and holidays)

Cell phones and PHS  
Tel: 03-5774-0947

Inquiry via fax  
Fax 03-5467-0431

Please write the "model number and detail of inquiry" and your "name, address, phone number, and FAX number".

32

### Customer registration

Thank you for purchasing amadana product. We recommend the "amadana" customer registration to all our customers so that you can enjoy using our products over a long period. Benefits of the customer registration and how to register are as follows:

#### Benefits of customer registration

\* These benefits are only for customers who are registered.  
\* Deadline for the registration is one year from the date of purchase.

\* Benefits are subject to change without prior notice.

\* These services are available in Japan only.

#### Benefits

You can receive latest product information and campaign information regularly.

33 (for those who wish to receive information)

#### How to register

Visit the web site below for more information on customer registration. You can also register via cell phone.

\* Some cell phone models are not available.

\* You can register yourself only if you purchased amadana brand products.

<http://www.amadana.com/customer>

#### What you need for registration:

The "registration code" described on this document and "manufacture number" printed on the product body.

**Registration code: V522C10**

\* Alphabet L, I, and O are not used.

#### Manufacture number:

The manufacture number printed on the bottom of the product body

For registration, carefully read the precautions described on the above web site.

### Warranty (Please read the next page too)

1. If you cannot come to the dealer from which you bought the product due to moving or if you are given this product as a gift, please contact our customer support center.
2. Even within the warranty period, you will be charged for the repair service in the following cases:  
(a) Failure or damage due to erroneous use, remodeling, or unauthorized repair. (b) Failure or damage due to transportation, moving, or fall after purchase. (c) Failure or damage due to natural disasters including fire, earthquake, flood, or lightning strike, environmental pollution, damage from salt water, damage from corrosive gases (such as sulfide), abnormal voltage, invalid power source (voltage or frequency) etc.  
(d) Failure or damage when this product is used in a situation other than general household use (for example, long-term use for professional purpose, loading to a vehicle or marine vessel). (e) When this warranty is not supplied. (f) When the date of purchase, customer name, dealer name are not filled out or when they are altered. (g) Exchange of consumable parts including batteries.
3. This warranty is valid only in Japan.
4. This warranty should be kept for future reference as this will not be reissued if you lose it except for force majeure including theft and fire.

This warranty is intended for the free repair service in the terms and conditions described in this document. This warranty does not limit your legal rights. Please contact your dealer or our support center for a repair service after the warranty period etc. \* For more information on the repairs after the warranty period, see the section on after-sale service.

REALFLET co., ltd. tel 03-5774-0947

34